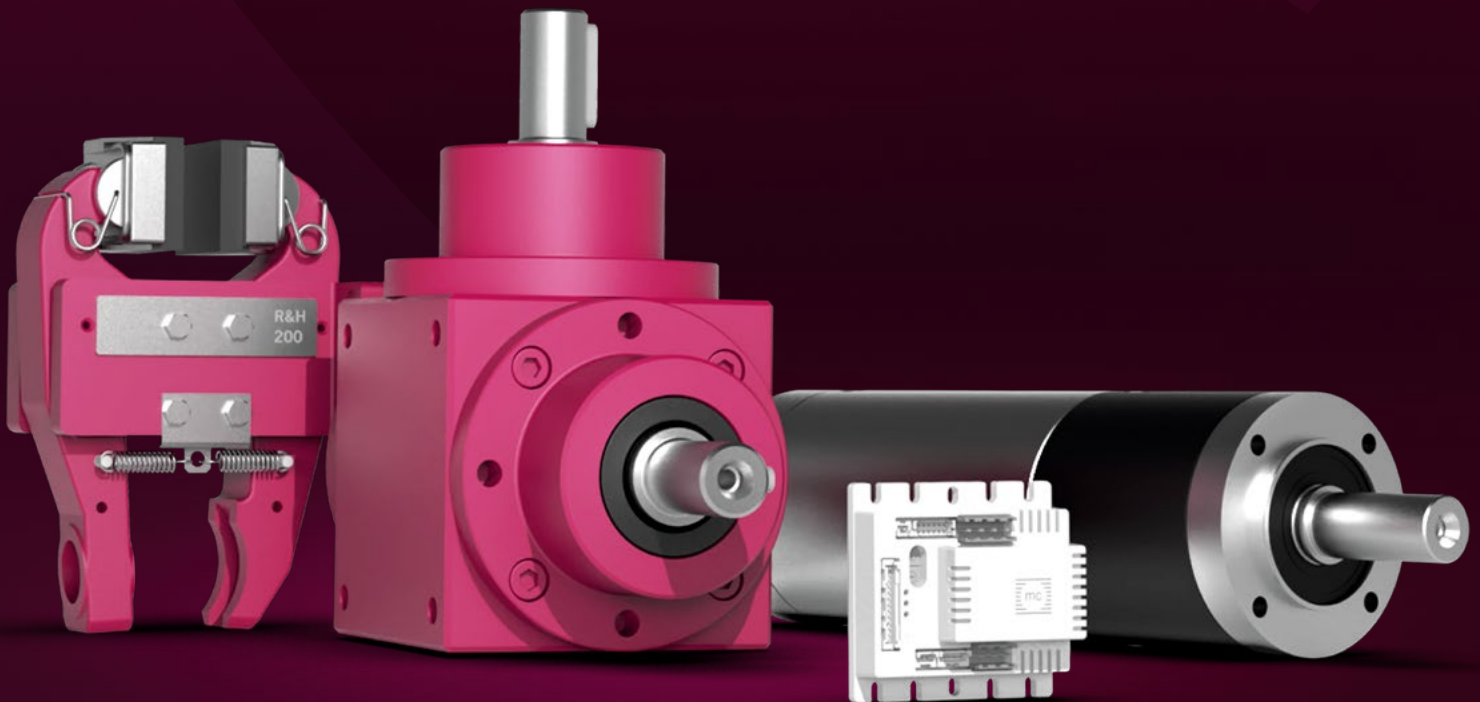




ATEK
DRIVE SOLUTIONS
BRAKES · GEARS · MOTORS

POWER BECOMES MOTION

Solutions for a complete drive train with brakes,
gearboxes and motors with controllers





EFFICIENT. VERSATILE. COMPREHENSIVE.

Together with **ATEK Drive Solutions GmbH**, we are shaping the transformation from component manufacturer to solution provider for the entire drive train. Our path to the future is built on growth and the continuous advancement of our technological expertise. For this purpose and to form **ATEK Drive Solutions GmbH**, ATEK Antriebstechnik Willi Glapiak GmbH and Deutsche van Rietschoten & Houwens GmbH merged, combining decades of experience in the fields of gearboxes and brakes at the Rellingen site, which has been supplemented by expertise in servomotor development.

Our goals are ambitious: we are integrating engine assembly at our modernized and expanded site in Rellingen, and by 2030, we aim to double both our revenue and the number of employees compared to the respective numbers in 2022.

Here, just outside Hamburg, we work with a dedicated team that values, digital tools, flat hierarchies, short communication channels, and high standards and quality. We are passionate about technology, encouraging of teamwork, and committed to developing tailored solutions for our customers and partners.

We have ideal conditions for the success of our transformation: For decades, ATEK and Rietschoten have successfully occupied a market niche for gearboxes and industrial brakes and developed great growth potential, which is now being unlocked by **ATEK Drive Solutions GmbH**.



Sebastian Sturm
Managing Director

AT A GLANCE

100

The number of gearboxes we produce per day

> 60

The number of countries we supply with products

16,000,000

The number of product variations available

45

The number of years our longest-operating gearboxes has

450,000

The number of individual items we have in stock

2010 2022 2024 2030

22 employees 75 employees 85 employees 125 employees

1939

Foundation of the Willi Glapiak turning shop, which later became ATEK

1961

Foundation of Deutsche van Rietschoten & Houwens GmbH

2022

Cooperation between Deutsche van Rietschoten & Houwens GmbH and ATEK Antriebstechnik Willi Glapiak GmbH

2024

Merger of Deutsche van Rietschoten & Houwens GmbH and ATEK Antriebstechnik Willi Glapiak GmbH to form **ATEK Drive Solutions GmbH**

2026

The solution provider for drive trains consisting of gearboxes, brakes and motors with controllers

2030

Doubling of sales compared to 2022

ALL-ROUND SERVICE FOR MAXIMUM VALUE RETENTION

Comprehensive service is available throughout the entire product lifecycle – from spare parts supply to professional refitting.

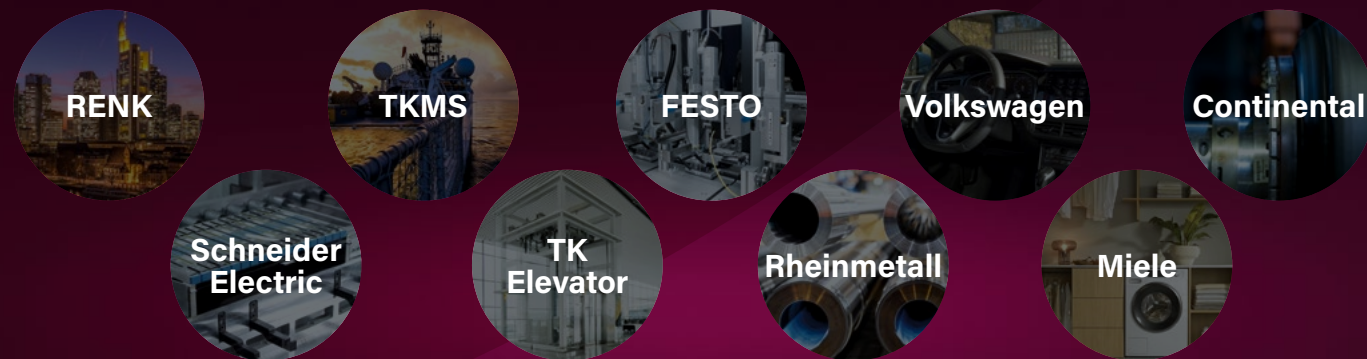
Our services at a glance:

- **Spare parts supply**
Fast delivery ensured by serial number traceability – even for older models
- **Refit & modernisation**
Professional refitting of older drive systems, comprehensive application consulting, and drive design
- **Product lifecycle management**
Early involvement in innovation processes and replacement strategies to ensure you always remain at the cutting edge of technology
- **Repair and inspection service**
Fast repairs, urgent repairs, service reports, individual training, cost-effective disposal, and a collection and delivery service

Your strong partner for drive solutions:

- **Short response times**
Personal support enables rapid responses to enquiries, quotations, and orders
- **Everything from a single source**
Having a single point of contact for consulting, delivery, and service provides advantages, with no additional suppliers and clearly defined warranty
- **Customized solutions**
In-house prototype construction and modern testing facilities to ensure innovative, technically advanced results
- **Express delivery times**
Standard products typically delivered within two weeks
- **International availability**
Fast support is ensured worldwide by a global dealer network

WE ARE PROUD OF OUR CUSTOMERS



RELIABLE SOLUTIONS FOR EVERY INDUSTRY

Drive technology from **ATEK Drive Solutions** has proven itself millions of times across nearly all industries. Where standard solutions are not sufficient, customized concepts are created—cooperative, targeted, and efficient. The portfolio is broad and continuously evolving. Partnership is offered for:



Brake solutions – safety and robustness for demanding tasks

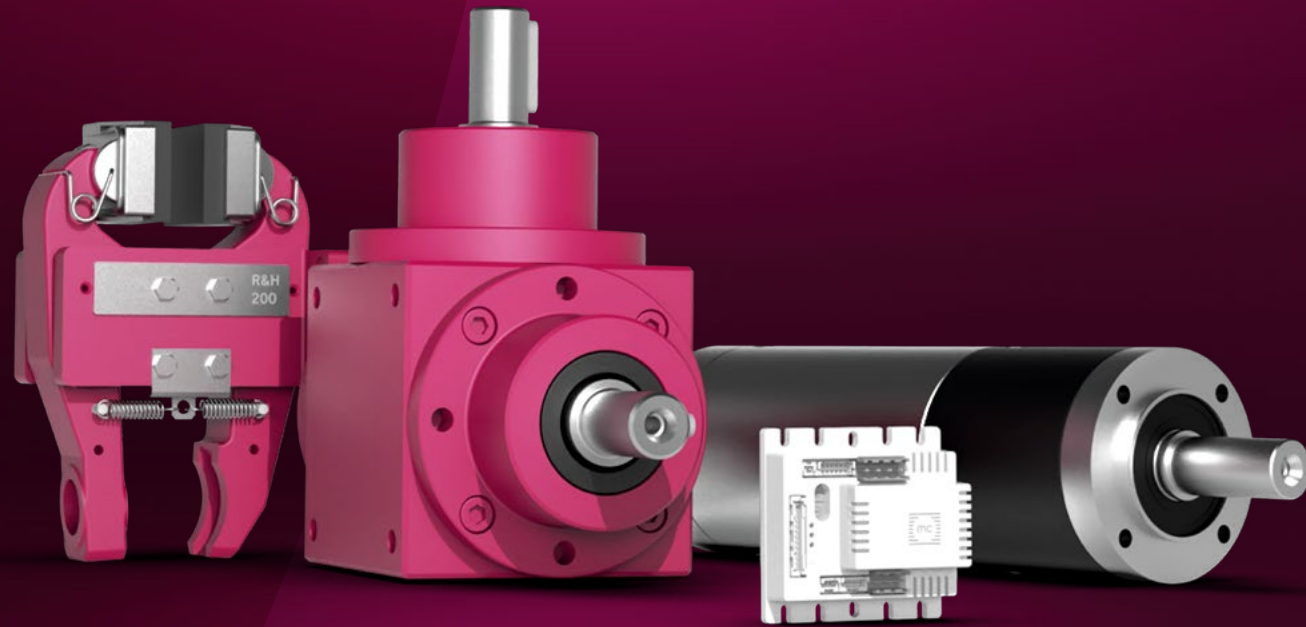
- **Mining**
Ultra-stable brakes for the toughest conditions – day and night
- **Cranes & hoists**
Compact high-end systems with variable designs
- **Cable & wire machines**
Customised, compact brakes for every machine size
- **Amusement parks**
Maximum safety and reliability for rides
- **Shipbuilding**
Completely assembled, individually tailored brake systems
- **Stainless steel**
Brakes for extreme temperature and force loads
- **Offshore & renewable energies**
Saltwater-resistant, explosion-proof, high-performance brakes
- **Power plants**
Powerful solutions for energy control and safety

Gearbox solutions – precision, cost-effectiveness and reliability for every application

- **Machine tools**
High-precision, high-performance gearboxes for demanding machining processes
- **Woodworking**
Robust, overload-proof gearboxes for flexible, economical production
- **Automation & Robotics**
Customisable gearboxes with maximum process reliability, a long service life, and efficiency
- **Food & medicine**
Hygienic, corrosion-resistant and energy-efficient solutions – with food-grade lubricants (NSF H1) on request
- **Logistics & packaging**
Durable, dynamic systems for demanding, fast, and precise conveyor and packaging systems

Motor solutions – dynamism, precision and efficiency for a wide range of applications

- **Automation & robotics**
High-precision servomotors for fast, accurate motion sequences in automated production lines
- **Machine tools**
Powerful motors for precise control and reliable machine processes
- **Medical & laboratory technology**
Reliable servo drives for the highest operational safety and hygiene standards
- **Packaging & logistics**
Energy-efficient servomotors for dynamic, low-maintenance conveyor and packaging systems
- **Renewable energies**
Robust drives to ensure efficient control in wind and solar technology



THREE COMPONENTS – ONE SOLUTION

With brakes, gearboxes, and motors with controllers, we convert power into motion.

With extensive expertise in gearboxes, brakes, and servomotors, **ATEK Drive Solutions** provides **customized solutions for complete drive systems**. The products represent **German quality** and are available within 14 days.

Utilizing **comprehensive know-how, state-of-the-art software, and high-quality, sustainable materials, the highest technical standards and precise implementation** of individual requirements are ensured. The team remains up to date with the latest technology, enabling optimal response to specific customer needs.

A key advantage is the **short delivery time**. Optimized processes, efficient warehousing, and **forward-looking production planning ensure fast and reliable availability**—so projects can be completed on schedule and waiting times are kept to a minimum.



BRAKE TECHNOLOGY

Innovative, sustainable and safe brakes and brake systems

A modular system comprising various brake types—including hydraulic, pneumatic, manual, and electric versions—is available for a wide range of applications.

Extensive expertise based on decades of experience at Deutsche van Rietschoten & Houwens GmbH in heavy industry, shipbuilding, mining, steel construction, and the mining sector forms the foundation for customized solutions.

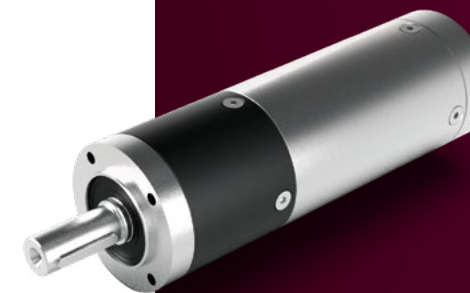
All brakes and braking systems are assembled at the site in Germany. Upon request, braking systems can be delivered in accordance with internationally recognized standards and certifications.



GEAR TECHNOLOGY

Expertise in modular gearboxes

The gearboxes from **ATEK Drive Solutions** combine the expertise of several generations. Customer orientation, short delivery times, and a wide range of solutions are central priorities. The portfolio includes worm gearboxes, planetary gearboxes, bevel gearboxes, miniature gearboxes, servo gearboxes, and special gearboxes.



MOTOR TECHNOLOGY

Drive for performance

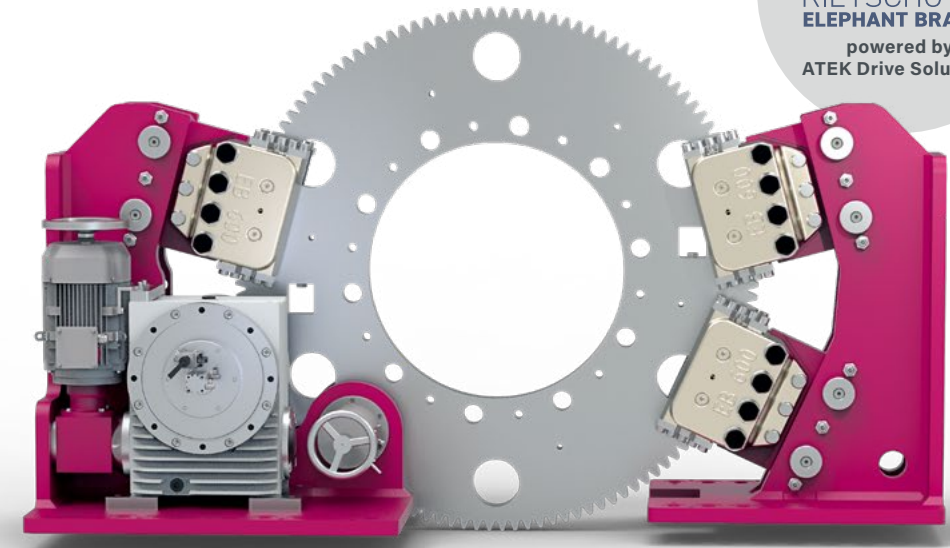
The development of in-house motors completes the portfolio as a full-range provider for entire drive systems. Electric motors, including controllers, are developed in a wide variety of configurations—some so compact and powerful that direct integration into gearboxes is possible. This approach saves installation space and increases efficiency.

OUR ELEPHANT BRAKES

OUR HIGHLIGHT: CUSTOMISED SHAFT BRAKE SYSTEMS

The customized shaft brake systems are optionally equipped with split brake discs and remain fully functional even after flooding with a water column of up to five meters (higher values available on request). The systems are designed for submersion durations of up to 72 hours and continue to operate reliably afterward. They can withstand shock loads of up to 150g. The analytical verification of shock resistance as well as complete ILS documentation will be provided for you by **ATEK Drive Solutions**.

SHAFT BRAKE SYSTEMS



Shaft brake system
Turning, Locking, Braking

System solutions for customised shaft brake systems on ships, consisting of a turning gear ("turning"), a locking device ("locking") and a shaft brake ("braking"), an actuating unit (e.g. hydraulic) and a control system. Combine according to your requirements and preferences.



Braking

- Quick shutdown of the shaft
- Support for the reversing process
- Improved manoeuvrability
- Support for braking the shaft
- Prevention of flow-induced rotation during non-operation

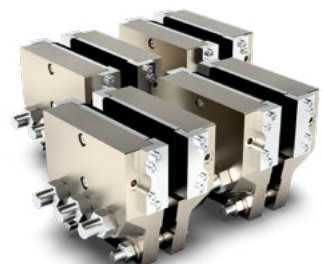
Turning

- Low travel speed turning, e.g. in port, even with the transmission disengaged
- Controlled shaft rotation during installation, repair and maintenance

Locking

- Shaft blocking during maintenance and servicing work
- Flow-induced rotation prevention when not in operation

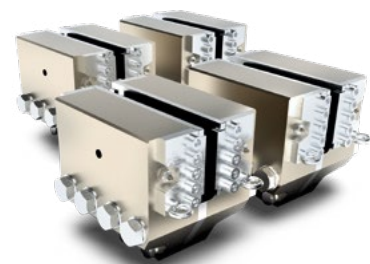
BRAKING - ELEPHANT BRAKES - BRAKING SYSTEMS



Brake system
4 × Type EB500

Hydraulically operated closing,
spring operated opening

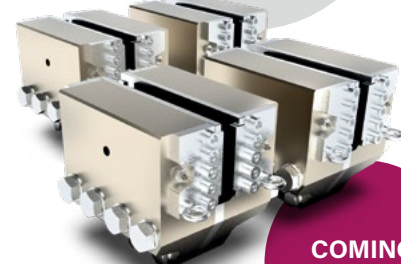
Braking force*:
> 400 kN



Brake system
4 × Type EB600

Hydraulically operated closing,
spring operated opening

Braking force*:
> 750 kN



Brake system
4 × Type EB700

Hydraulically operated closing,
spring operated opening

Braking force*:
> 1,250 kN



COMING
SOON

LOCKING - LOCKING DEVICE



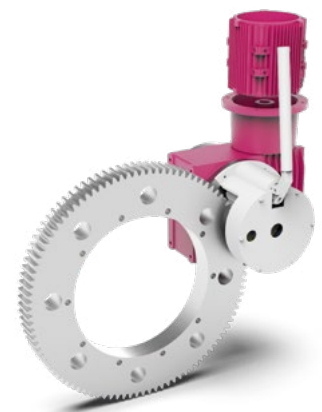
Locking device

Locking bolt diameter:
up to 200 mm

Locking torque:
up to 3,500 kNm

Other sizes available on request

TURNING - CRUISING GEAR

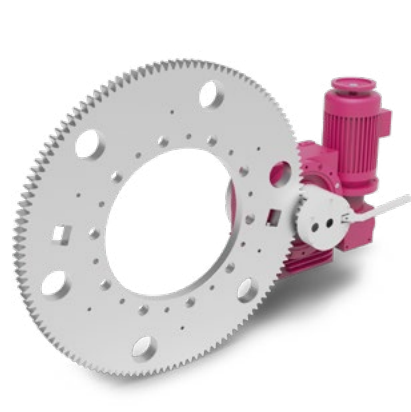


Turning gear
Type S200

Size 1 (BG1)

Breakaway torque: 32 kNm

Continuous torque: 16 kNm

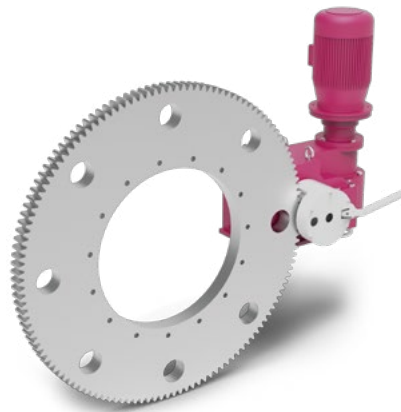


Turning gear
Type S250

Size 2 (BG2)

Breakaway torque: 72 kNm

Continuous torque: 36 kNm



Turning gear
Type S350

Size 3 (BG3)

Breakaway torque: 190 kNm

Continuous torque: 95 kNm

CONTROL SYSTEM AND POWER UNIT



Control System

The entire control of the braking
system is handled by a freely
configurable control system.
This is, among other things:

Flood-proof

ATEX-compliant

CSA/UL-compliant

With analogue or digital design



Power Unit

Electrified/electro-hydraulic

Low maintenance

Powerful

Noise level:
<62 dB(A) possible



ELEPHANT BRAKES - LEVER BRAKES



**Lever brake
Type RH**

Manually operated closing,
spring operated opening

Braking force*:
up to 29.3 kN



**Lever brake
Type RH**

Pneumatically operated closing,
spring operated opening

Braking force*:
up to 26.8 kN



**Lever brake
Type RH**

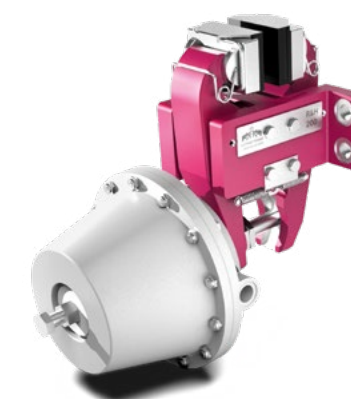
Hydraulically operated closing,
spring operated opening

Braking force*:
up to 35.3 kN



**Lever brake
Type RH**

Electrically operated closing,
spring operated opening
Screw-on dimensions identical to
known RH lever brakes
Planned braking force*:
up to 40 kN



**Lever brake
Type RH**

Spring loaded closing,
pneumatically operated opening

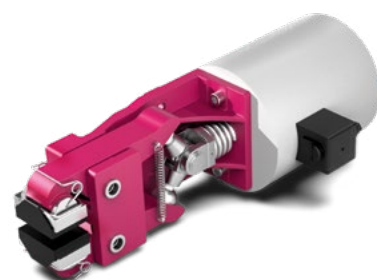
Braking force*:
425 N – 28,800 N



**Lever brake
Type RH**

Spring loaded closing,
hydraulically operated opening

Braking force*:
1.2 kN – 30 kN



**Lever brake
Type EMS**























Spring operated closing,
electrically operated opening

Braking force*:
600 N – 2,700 N

ELEPHANT BRAKES MODULAR SYSTEM

- A wide range of combinations is possible
- Same actuation can be used for multiple brake calipers
- More flexibility and customisation options
- Brake forces up to 35,300 N can be achieved

ES
EM

		OPERATION																					
																							
TYPE OF PLIERS	RH 050 & 051																						
	RH 100																						
	RH 125																						
	RH 200																						
	RH 215- 245																						
	RH 250																						
	RH 300																						
	RH 350 & 360																						

S

* Dependent on the coefficient of friction of the friction lining

atek.de/en/home-en

ELEPHANT BRAKES - FIXED CALIPER BRAKES



Fixed caliper brakes
Type EB025

Pneumatically operated closing,
elastomer operated opening

Braking force*:
up to 150 N



Fixed caliper brakes
Type EB030

Pneumatically operated closing,
elastomer operated opening

Braking force*:
up to 210 N



Fixed caliper brakes
Type EB108

Pneumatic or hydraulic
actuated closing possible,
spring actuated opening

Braking force*:
up to 1.5 kN



Fixed caliper brakes
Type EB115

Pneumatic or hydraulic
actuated closing possible,
spring actuated opening

Braking force*:
up to 1.5 kN



Fixed caliper brakes
Type EB240

Hydraulically operated closing,
spring operated opening

Braking force*:
up to 7.5 kN



Fixed caliper brakes
Type EB255AR

Hydraulically operated closing,
spring operated opening

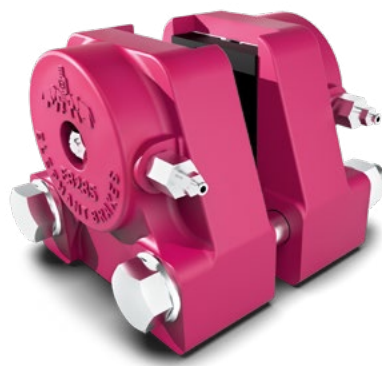
Braking force*:
up to 15.6 kN



Fixed caliper brakes
Type EB255

Hydraulically operated closing,
spring operated opening

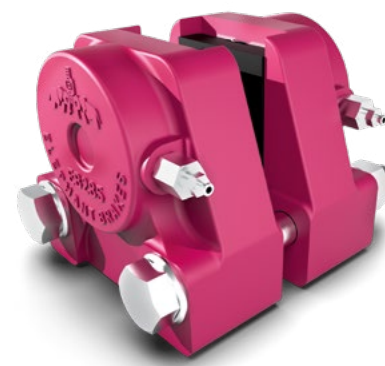
Braking force*:
up to 15.6 kN



Fixed caliper brakes
Type EB285AR

Hydraulically operated closing,
spring operated opening

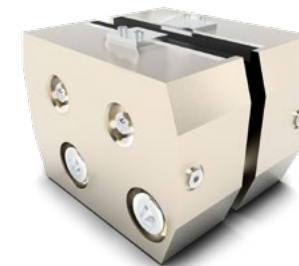
Braking force*:
up to 34 kN



Fixed caliper brakes
Type EB285

Hydraulically operated closing,
spring operated opening

Braking force*:
up to 34 kN



Fixed caliper brakes
Type EB470

Hydraulically operated closing,
spring operated opening

Material:
Aluminium
Braking force*:
up to 69 kN



Fixed caliper brakes
Type EB500

Hydraulically operated closing,
spring operated opening

Material:
Grey cast iron with increased
corrosion protection (nickel-plated)
Braking force*:
up to 115 kN

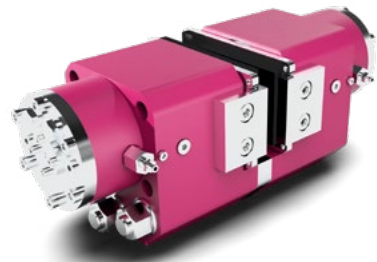


Fixed caliper brakes
Type EB600

Hydraulically operated closing,
spring operated opening

Material:
Grey cast iron with increased
corrosion protection (nickel-plated)
Braking force*:
up to 230 kN

ELEPHANT BRAKES - FIXED CALIPER BRAKES



Fixed caliper brakes
Type EBS001

Spring loaded closing,
hydraulically operated opening

Braking force*:
15 kN – 30 kN



Fixed caliper brakes
Type EBS002

Spring loaded closing,
hydraulically operated opening

Braking force*:
29 kN – 50 kN



Fixed caliper brakes
Type EBS004

Spring loaded closing,
hydraulically operated opening

Braking force*:
49 kN – 104 kN



Fixed caliper brakes
Type EBS006

Spring loaded closing,
hydraulically operated opening

Braking force*:
85 kN – 210 kN

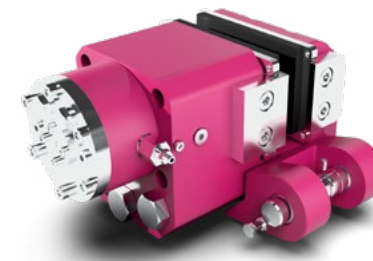


Fixed caliper brakes
Type EBS008

Spring loaded closing,
hydraulically operated opening

Braking force*:
214 kN – 420 kN

ELEPHANT BRAKES - FLOATING CALIPER BRAKES



Floating caliper brakes
Type EBS001FL

Spring loaded closing,
hydraulically operated opening

Braking force*:
15 kN – 30 kN



Floating caliper brakes
Type EBS002FL

Spring loaded closing,
hydraulically operated opening

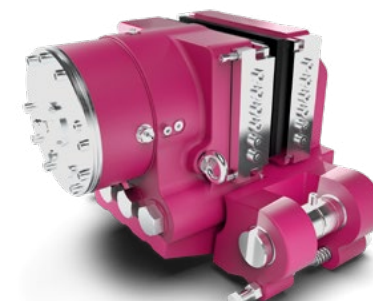
Braking force*:
29 kN – 47 kN



Floating caliper brakes
Type EBS004FL

Spring loaded closing,
hydraulically operated opening

Braking force*:
49 kN – 104 kN



Floating caliper brakes
Type EBS006FL

Spring loaded closing,
hydraulically operated opening

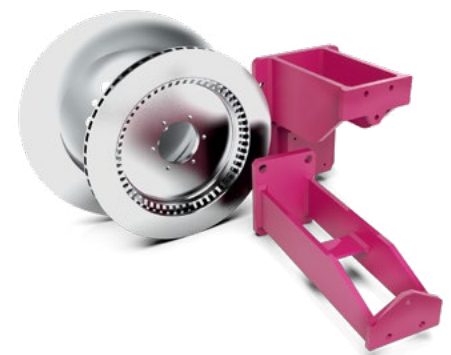
Braking force*:
80 kN – 180 kN



Floating caliper brakes
Type EBS008FL

Spring loaded closing,
hydraulically operated opening

Braking force*:
180 kN – 370 kN



Accessories
for all types

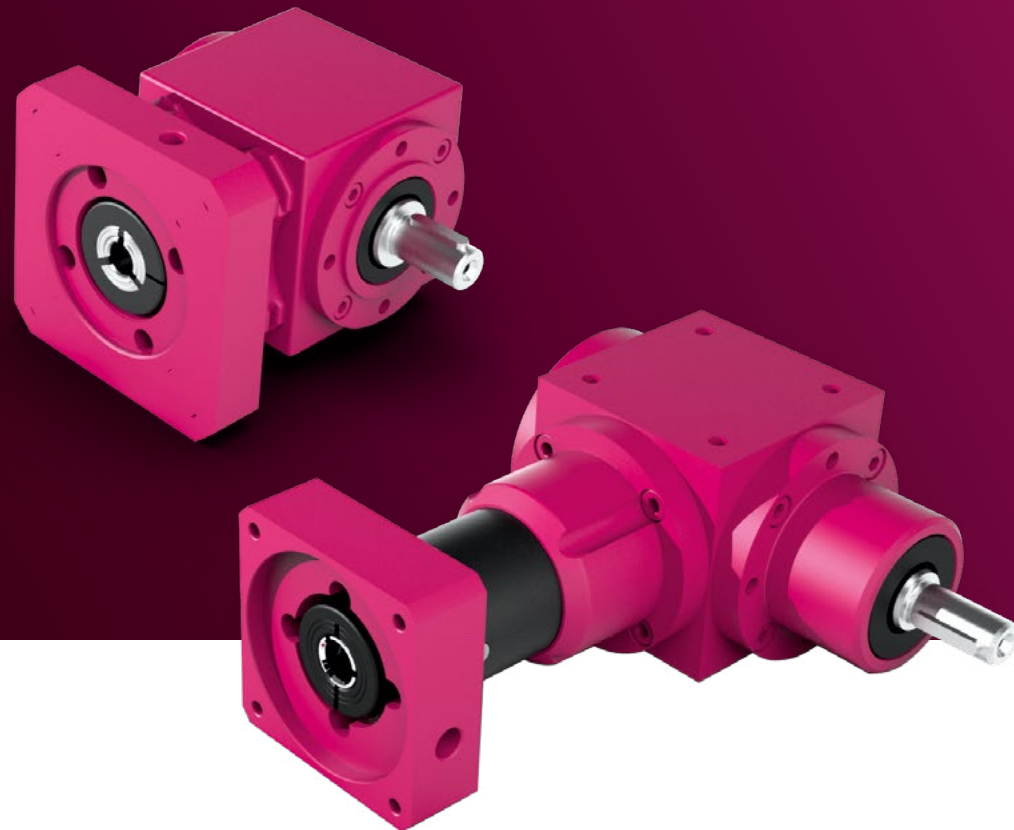
Brake discs, brake pads,
mounting stands, mounting plates,
hydraulic units, controls, clutches,
hubs, and much more



OUR GEARBOXES

OUR HIGHLIGHT: THE VCE SERIES

The VCE series combines bevel gear and planetary gearboxes for innovative servo applications. The single-stage version offers up to 20% shorter design, optimised weight and performance, as well as high precision, torsional rigidity and low torsional backlash. The multi-stage version impresses with its modular design, gear ratios up to 400:1, high rigidity, and a choice of four sizes and 19 gear ratios.



BEVEL GEARBOXES



Bevel gearbox Type V, VS

Transmissions:
 $i = 1:1$ to $6:1$

Maximum output torque:
5,400 Nm

Backlash:
< 6 – 30 arcmin



Miniature bevel gearbox Type L

Material:
Aluminium

Transmissions:
 $i = 1:1$ to $4:1$

Maximum output torque:
16 Nm

Backlash:
< 10 – 30 arcmin



Stainless steel gearbox in hygienic design Type HDV, HDVS

Material:
Stainless steel

Transmissions:
 $i = 1:1$ to $6:1$

Maximum output torque:
430 Nm

Backlash:
< 6 – 30 arcmin

PLANETARY GEARBOXES

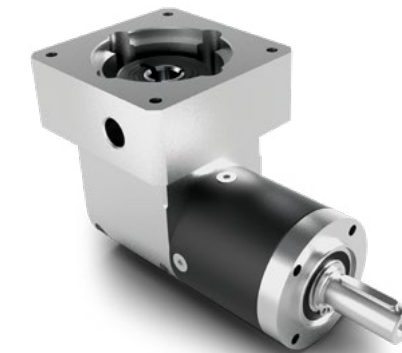


Planetary gearbox Type PCE

Transmissions:
 $i = 3:1$ to $100:1$

Maximum output torque:
135 Nm

Backlash:
< 10 – 22 arcmin



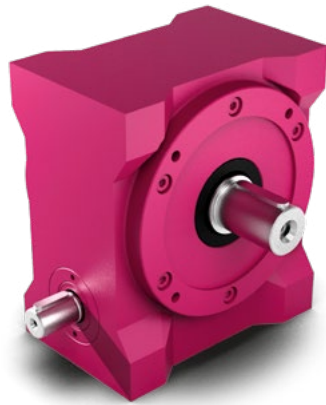
Angular planetary gearbox Type BPCE

Transmissions:
 $i = 3:1$ to $100:1$

Maximum output torque:
216 Nm

Backlash:
< 15 – 25 arcmin

WORM GEAROX



**Worm gearbox
Type S**

Transmissions:
 $i = 5:1$ to $83:1$

Maximum output torque:
13,720 Nm

Backlash:
< 3 arcmin



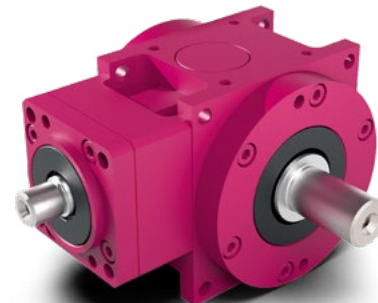
**Double worm gearbox
Type SD**

Transmissions:
 $i = 25:1$ to $6,889:1$

Maximum output torque:
10,300 Nm

Backlash:
On request

HYPOID GEAROX



**Hypoid gearbox
Type H**

Transmissions:
 $i = 3:1$ to $15:1$

Maximum output torque:
1,450 Nm

Backlash:
< 3 arcmin

SERVO GEARBOXES



**Bevel gearbox with
servomotor flange
Type VC**

Transmissions:
 $i = 1:1$ to $6:1$

Maximum output torque:
472 Nm

Backlash:
< 6 arcmin

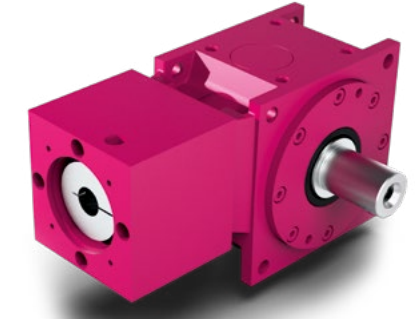


**High-ratio
servo gearbox
Type VCE**

Transmissions:
 $i = 8:1$ to $400:1$ (multi stage)
 $i = 1:1$ to $6:1$ (single stage)

Maximum output torque:
280 Nm

Backlash:
< 6 – 30 arcmin



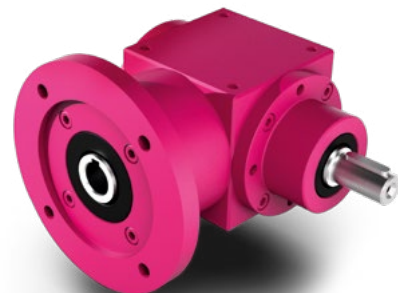
**Servo gearbox
Type HC**

Transmissions:
 $i = 3:1$ to $15:1$

Maximum output torque:
1,450 Nm

Backlash:
< 5 arcmin

GEARBOXES OPTIMISED FOR IEC STANDARD MOTOR MOUNTING

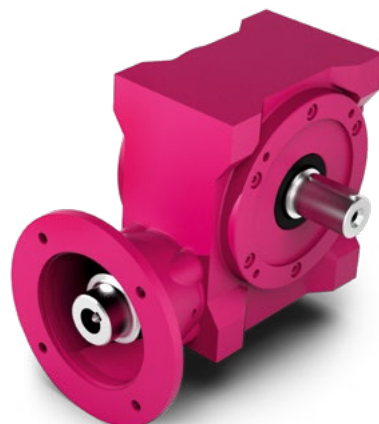


**Bevel gearbox
with IEC motor flange
Type VL**

Transmissions:
 $i = 1:1$ to $6:1$

Maximum output torque:
1,750 Nm

Backlash:
< 4 arcmin

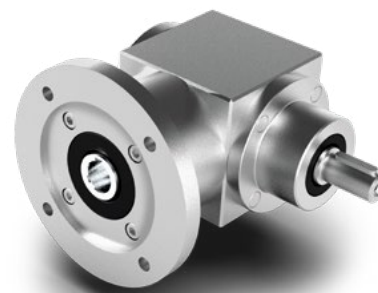


**Worm gearbox
with IEC motor flange
Type SL**

Transmissions:
 $i = 5:1$ to $83:1$

Maximum output torque:
13,700 Nm

Backlash:
< 3 arcmin



**Hygienic design bevel gearbox
with stainless steel motor flange
Type HDVL**

Material:
Stainless steel

Transmissions:
 $i = 1:1$ to $6:1$

Maximum output torque:
220 Nm

Backlash:
< 4 arcmin

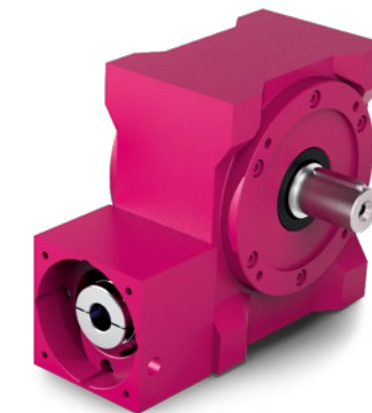


**Servo gearbox
Type LC**

Transmissions:
 $i = 1:1$ to $4:1$

Maximum output torque:
4 Nm

Backlash:
< 10 arcmin



**Servo gearbox
Type SC**

Transmissions:
 $i = 5:1$ to $83:1$

Maximum output torque:
1,580 Nm

Backlash:
< 3 arcmin



**Wheel sets
Bevel gear sets**

Transmissions:
 $i = 1:1$ to $6:1$

More on request

Worm gear sets

9 sizes of centre distance:
 $A = 040$ to 250 mm

OUR GEARS

OUR HIGHLIGHT: PCEM – PLANETARY GEARBOX WITH MOTOR

The gear motors combine a gearbox with a powerful motor and are particularly compact and low-maintenance. They offer high efficiency owing to their optimised design and a wide variety of gear ratios.

The PCEM motor group covers outputs from 0.15 to 4 Nm and is available in sizes 40, 60, and 80 mm. The first step is a particularly compact servomotor with a 40 mm housing diameter, 0.75 Nm, 24 VDC, 8 A, and 150 W, which (with its maximum gear ratio of 100:1) offers optimum flexibility, especially for the smallest installation spaces. The motor gear unit is available with an encoder and a controller.

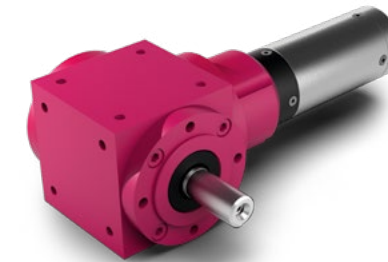


SERVO GEARBOX MOTORS



**Angular planetary gearbox
with servomotor
Type BPCEM**

Transmissions: $i = 3:1$ to 100:1
Spiral-toothed bevel gears
Low maintenance
Includes encoder
Optional controller and/or brake



**Bevel gearbox
with servomotor
Type VCEM**

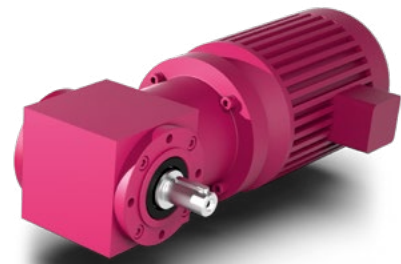
Low holding torque
High efficiency and
high power density
Transmissions: $i = 1:1$ to 400:1
Low-backlash design:
< 6 arcmin (single stage)
< 15 arcmin (multi stage)
Includes encoder
Optional controller and/or brake



**Planetary gearbox
with servomotor
Type PCEM**

High efficiency thanks to
optimised, compact design
High gear ratio variety through
combination of multiple
planetary stages
Transmissions: $i = 03:1$ to 100:1
Low maintenance
Includes encoder
Optional controller and/or brake

IEC GEAR MOTORS



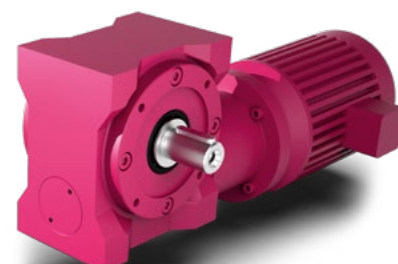
**Bevel gearbox
with IEC standard motor
Type VLM**

Bevel gearbox with spiral gearing
incl. IEC standard motor
Small, lightweight and space-saving
Transmissions:
 $i = 1:1$ to 6:1
Low-backlash design with
up to < 6 arcmin



**Hygienic Design Bevel Gearbox
with IEC Standard Motor
Type HDVLM**

Including motor and gearbox
Gearbox sizes
HDVL 065 to HDVL 140
Power range from 0,25 to 2,2 kW
Transmissions: $i = 1:1$ bis 6:1
Maximum output torque: 430 Nm



**Worm gearbox
with IEC standard motor
Type SLM**

Robust, powerful and
low-noise worm gearbox
incl. IEC standard motor
Vibration-damping properties
Axial misalignment between
input and output shaft
Low-backlash design with up to
< 3 arcmin

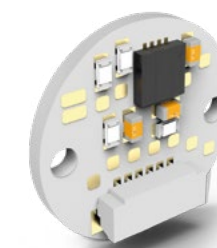
SERVOMOTORS



**Servomotor (PMSM)
Type M**

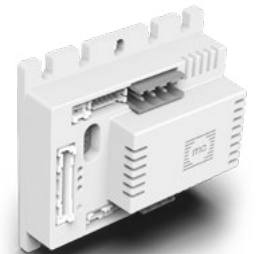
Single motor
Low cogging torque
Robust ball bearing system
High efficiency and
high power density
Modular system kit
Different performance
classes available
Includes encoder
Optional controller and/or brake

ACCESSORIES



**Encoders
for all types**

Supply voltage 3.3V and 5V
Absolute resolution up to 12 bits
(4,096 pulses per revolution)
Absolute or incremental
output signals according to
the industry standard
High accuracy up to $\pm 0.5^\circ$
RoHS compliant



**Controller
for all types**

Compact 4-quadrant controller
CAN interface with DS301 protocol
and DS402 device profile
Vector control (FOC)
for precise commutation
Integrated digital inputs and outputs
Protective functions: overvoltage,
undervoltage, and overtemperature
monitoring



ATEK
DRIVE SOLUTIONS
BRAKES · GEARS · MOTORS



atek.de/en/home-en

ATEK Drive Solutions GmbH
Siemensstrasse 47
25462 Rellingen
GERMANY

sales@atek.de
+49 4101 7953-0

CONTACT

Sales

Dipl.-Ing. (FH)
Juri Appel
Field Sales Manager DACH
M +49 160 96714221
juri.appel@atek.de

Purchasing

Gepr. Techn. Betriebsw.
Dirk Teschner
Head of Purchasing
M +49 151 20980158
dirk.teschner@atek.de

Human Resources

B.A.
Angelique Nowak
Head of HR
T +49 4101 7953-16
angelique.nowak@atek.de

General Management

Dipl.-Ing. (FH)
Sebastian Sturm
Managing Director
M +49 172 2660589
sebastian.sturm@atek.de