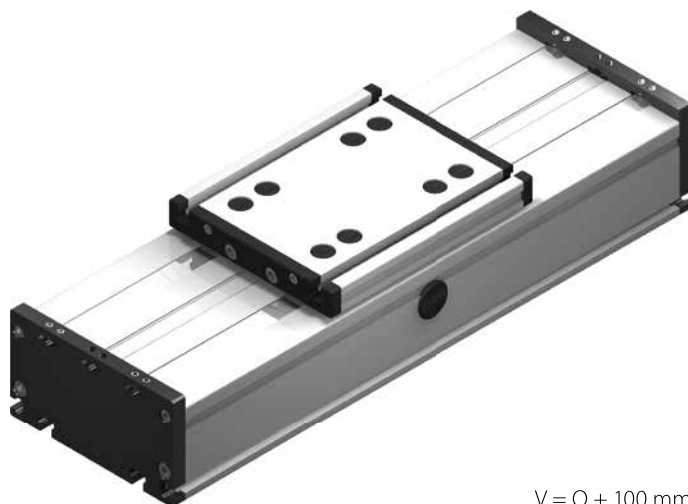
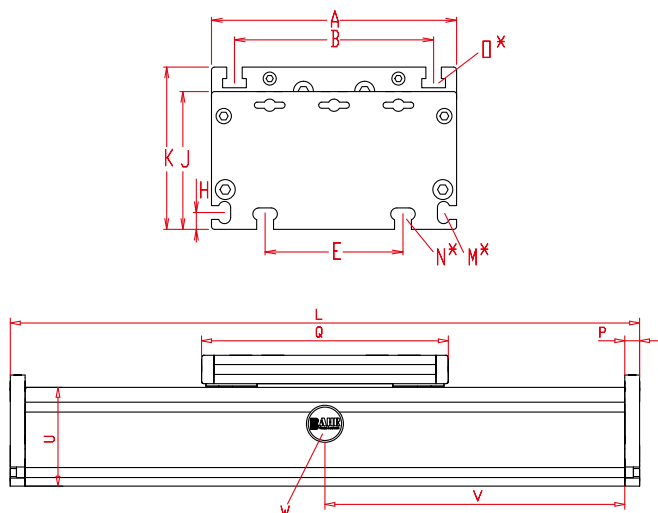


Linear system **DSR 120, 160, 200**

Dimensions (mm)



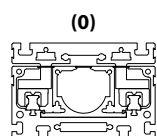
$$V = Q + 100 \text{ mm}$$

W = servicing position

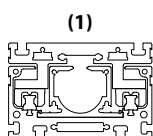
Increasing the carriage length will increase the basic length by the same amount.

Size	Basic length L	A	B	E	H	J	K	M for	N for	O for	P	Q	U	Basic weight	Weight per 100 mm
DSR 120	200	120	96	78	10	68	79	M 5	M 6	M 6	10	156	60	3,2 kg	0,71 kg
DSR 160	240	160	130	90	11	90	106	M 6	M 8	M 8	12	200	80	7,0 kg	1,5 kg
DSR 200	320	200	160	140	15	110	129	M 8	M 10	M 10	15	270	100	15,0 kg	2,9 kg

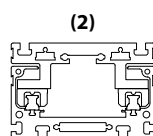
0 Choice of guide body profile: Stainless versions upon request.



internal profile
with cover bands

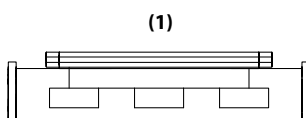
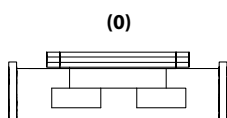


internal profile
without cover bands



without internal profile
and cover bands

0 Choice of carriages:



Size	Version 0		Version 1	
	Q	L	Q	L
120	156	200	156	200
160	200	240	>230	>270
200	270	320	>310	>360

DSR 160 0 0 0 0 0 0 0 1500

Pos. 1 2 3 4 5 6 7

Basic length + stroke = total length

Sample ordering code:

DSR160, with internal profile and cover bands, standard runner blocks, 1260 mm stroke.