



ATEK
DRIVE SOLUTIONS
BRAKES · GEARS · MOTORS

PRODUCT OVERVIEW

ATEK Drive Solutions GmbH
The solution provider for the
complete drivetrain

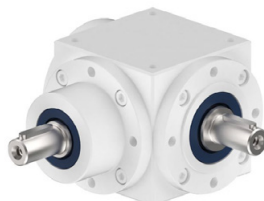
PRODUCT OVERVIEW GEARBOXES

Miniature- Bevel gearboxes Type L



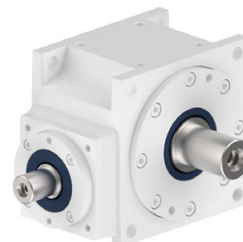
Gear ratios:
 $i = 1:1$ up to 4:1
Maximum output torque:
16 Nm
Backlash:
< 30 - 10 arcmin

Bevel gearboxes Type V



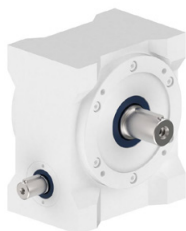
Gear ratios:
 $i = 1:1$ up to 6:1
Maximum output torque:
5.400 Nm
Backlash:
< 30 - 6 arcmin

Hypoid gearboxes Type H



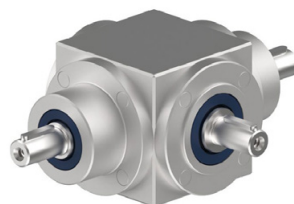
Gear ratios:
 $i = 3:1$ up to 15:1
Maximum output torque:
1.450 Nm
Backlash:
< 5 arcmin

Worm Gearboxes Type S



Gear ratios:
 $i = 10:1$ up to 83:1
Maximum output torque:
13.720 Nm
Backlash:
< 30 - 5 arcmin

Stainless Steel gears with Hygienic Design Type HDV



Gear ratios:
 $i = 1:1$ up to 6:1
Maximum output torque:
430 Nm
Backlash:
< 30 - 6 arcmin

Gearsets

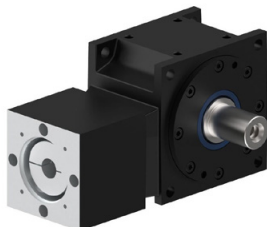


Bevel gear sets
Gear ratios:
 $i = 1:1 - 1,5:1 - 2:1$
Worm wheel sets
9 sizes from center distance
 $A = 040$ to 250 mm

PRODUCT OVERVIEW GEARBOXES

Servo-gearboxes

Type HC



Gear ratios:
 $i = 3:1$ up to $15:1$
Maximum output torque:
1.450 Nm
Backlash:
< 5 arcmin

Servo-gearboxes

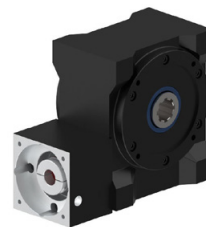
Type LC, VC



Gear ratios:
 $i = 1:1$ up to $1:6$
Maximum output torque:
700 Nm
Backlash:
< 20 - 6 arcmin

Servo-gearboxes

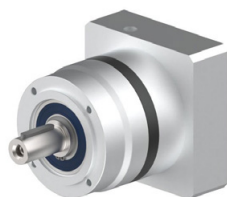
Type SC



Gear ratios:
 $i = 5:1$ up to $26:1$
Maximum output torque:
1.100 Nm
Backlash:
< 30 - 6 arcmin

Planetary gearboxes

Type PCE



Gear ratios:
 $i = 3:1$ up to $100:1$
Maximum output torque:
216 Nm
Backlash:
13 - 22 arcmin

Bevel-Planetary gearboxes

Type BPCE



Gear ratios:
 $3:1$ up to $100:1$
Maximum output torque:
216 Nm
Backlash:
15 - 25 arcmin

High ratio servo gearboxes

Type VCE

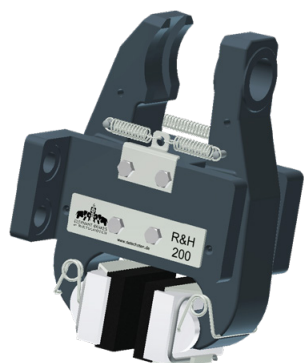


Gear ratios:
 $1:1$ up to $400:1$
Maximum output torque:
280 Nm

PRODUCT OVERVIEW BRAKES

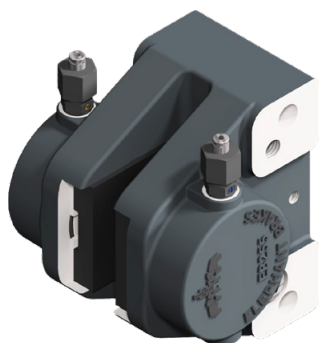
Caliper brakes

mechanically, hydraulically,
pneumatically or spring-applied



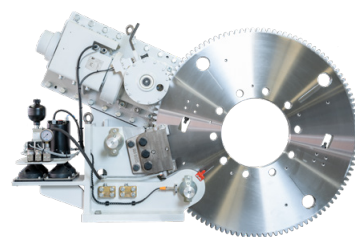
Braking force:
0 - 38.150 N

Modular brakes



Braking force:
210 - 400.000 N

Shaft brake systems



Modular system Elephant Brakes

- A variety of combinations are possible
- Same actuation can be used for several brake calipers
- Fewer different brake pads required
- More flexibility and customisability
- Braking forces up to 38,150 N achievable

Caliper	Actuator
R&H 050 R&H 051	098 100 402 102 103
R&H 100	096 098 099 101 102 103 105 250 405 / 406 550 / 560
R&H 200	096 098 099 102 103 105 107 250 / 251 405 / 406 412 550 / 552
R&H 250	098 099 102 103 105 107 250 / 251 405 / 406 412 550 / 552
R&H 215-245	098 099 102 103 105 107 250 / 251 405 / 406 412 550 / 552
R&H 300	098 103 105 107 106 / 108 250 / 251 405 / 406 412 550 / 552 / 563
R&H 350	090 204 / 205 135 435

PRODUCT OVERVIEW BRAKES

Elektromagnetical brakes

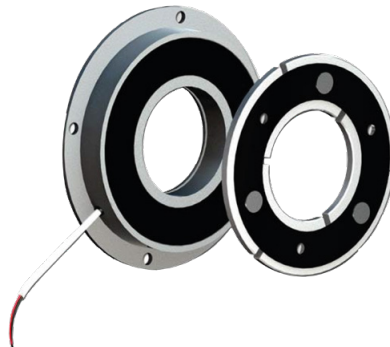
Type spring-applied brakes



Braking force:
7 - 1.500N

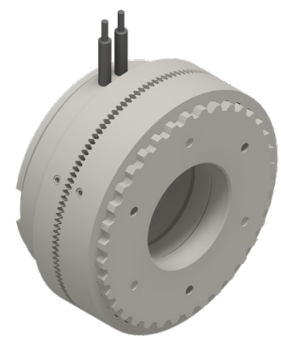
Elektromagnetical brakes

Type permanent magnet brakes



Braking force:
0,4 - 145 N

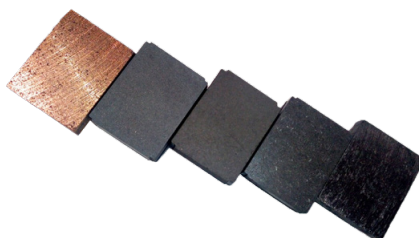
Gear couplings



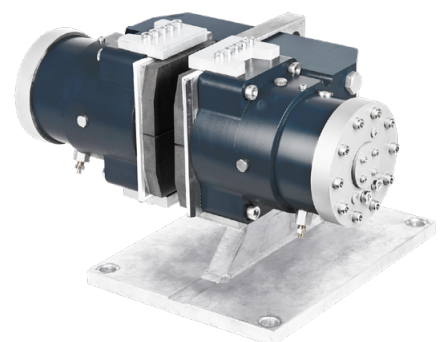
Accessory brake discs



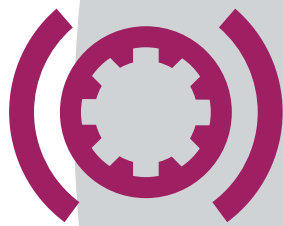
Accessory brake pads



Accessory Pedestals



Further Accessory: Hydraulic power units, controls, couplings, hubs and more



ATEK
DRIVE SOLUTIONS
BRAKES · GEARS · MOTORS

ATEK Drive Solutions GmbH
Siemensstrasse 47 · 25462 Rellingen

E-Mail Sales department: sales@atek.de

Phone: +49 - (0)4101/79 53-0

Fax: +49 - (0)4101/79 53-20

www.atek.de

