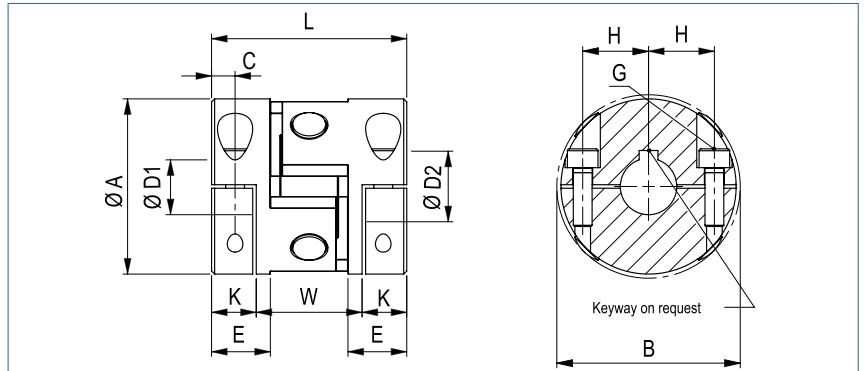


**Cardan Coupling**

with split hubs

optional full stainless steel version



Order Code

**GK-TH / 27 - 6 - 10**

Type / Size

ØD1 (H7)

ØD2 (H1)

Size	Torque $T_{KN}$ (Nm)	Torque $T_{Kmax}$ (Nm)	Dimensions (mm)									Technical Data						
			L Length	Ø A Outer Ø	D1/D2 Bore Sizes (H7)	B	C	K	W	H	E Hub-Length	F Screw (ISO 4762) TA (Nm)	Mass (kg)	Moment of Inertia J (kg mm <sup>2</sup> )	Torsional Stiffness CT (Nm/rad)	Misalignment radial Δ Kr (mm)	angular Δ Kw (°)	max. speed rpm
27	5	10	36	27	4-14	30	3.5	7.5	21	10	10.5	M3 1.9	0.040	4.30	802	1	6	7500
35	10	18	37	35	5-20	39	4.5	8.5	20	13	11	M4 4.6	0.069	12.19	1701	1.5	6	6000
56	35	100	53	56	8-32	61	6.5	12	29	20	15	M6 15.7	0.278	124	20630	2	6	3750
75	100	250	83	74.5	10-41	80	10	19	45	28	25	M8 38	0.76	609	51575	2	6	2850
100	250	580	97	100	20-55	106	12	21.5	54	37.5	27	M12 130	1.60	2246	85943	2.5	6	2100

Transmittable torque (Nm) depending on shaft diameter (mm)																							
Size	4	6	8	10	14	15	16	18	20	22	24	25	28	30	32	35	38	40	42	45	48	50	55
27	5.8	8.7	11.5	14.4	20.2																		
35		15.5	20.7	25.8	36.1	38.7	41.3	46.5	51.6														
56			47.4	59.3	83	88.9	94.8	106.7	118.5	130.4	142.2	148.1	165.9	177.8	189.6								
75				109	152	163	174	195	217	239	261	271	304	326	347	380	413	434					
100									503	553	603	628	704	754	804	879	955	1005	1055	1131	1206	1256	1382

**+** **Material** inner ring - aluminium  
hub - aluminium  
pin - steel

**Temperature Range** -100 °C ~ 250 °C