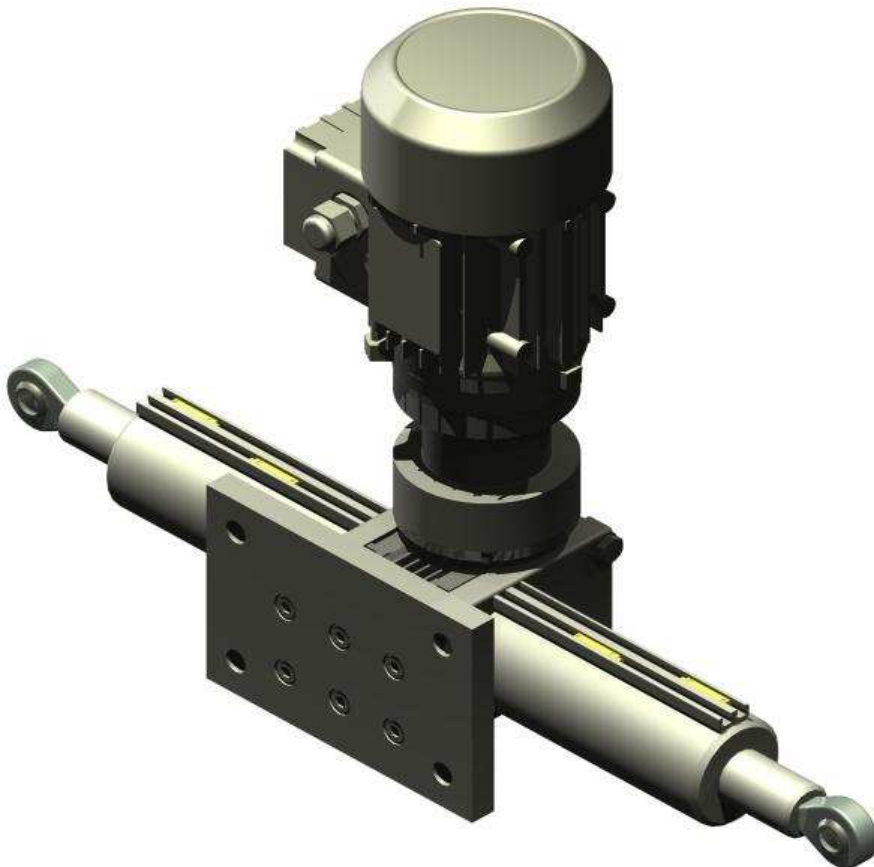


Electric Lifting Cylinder TV-5SE-DO



As a result of respective requests of our customers, we have designed the TV-5SE-DO series.

Main feature: one motor activates two trapezoidal screw drives using one gear. The advantage of this design is the simple attachment of the electric lifting cylinder using a flange plate on the side and the parallel synchronous run of both spindle units. This electric lifting cylinder can be used anywhere where adjustment motions are required in two opposite directions and for synchronous running.

You have the possibility of equipping different motors with IEC flanges. Moreover, special flange sizes can also be supplied in order to mount servo-motors, for example. In standard cases, three-phase motors are equipped with IEC flange that can be optionally equipped with a brake.

Application area:

The cylinder TV-5 SE-DO is already being used successfully in different applications. These are, for example:

- closing door wings
The electric lifting cylinder activates a closing mechanism for a door wing where this is locked at the top and the bottom at the same time.
- Drive for closures on a crane crossbeam
The electric lifting cylinder locks the closures on a crane crossbeam for transporting containers.
- Drive for a gripping pliers
The electric lifting cylinder activates a gripper for lifting a load.

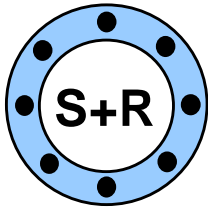
Options:

- solenoid switch, also on both sides for increased operational safety
- overload coupling for limiting the adjustment force
- motors with brakes
- special flanges for attaching motors without IEC flange
- other fixing possibilities, e.g., fork heads, male thread or female thread

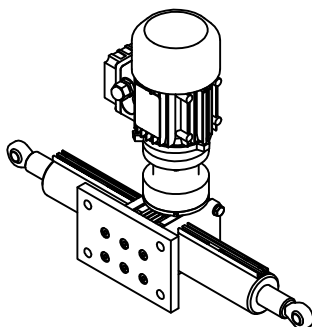
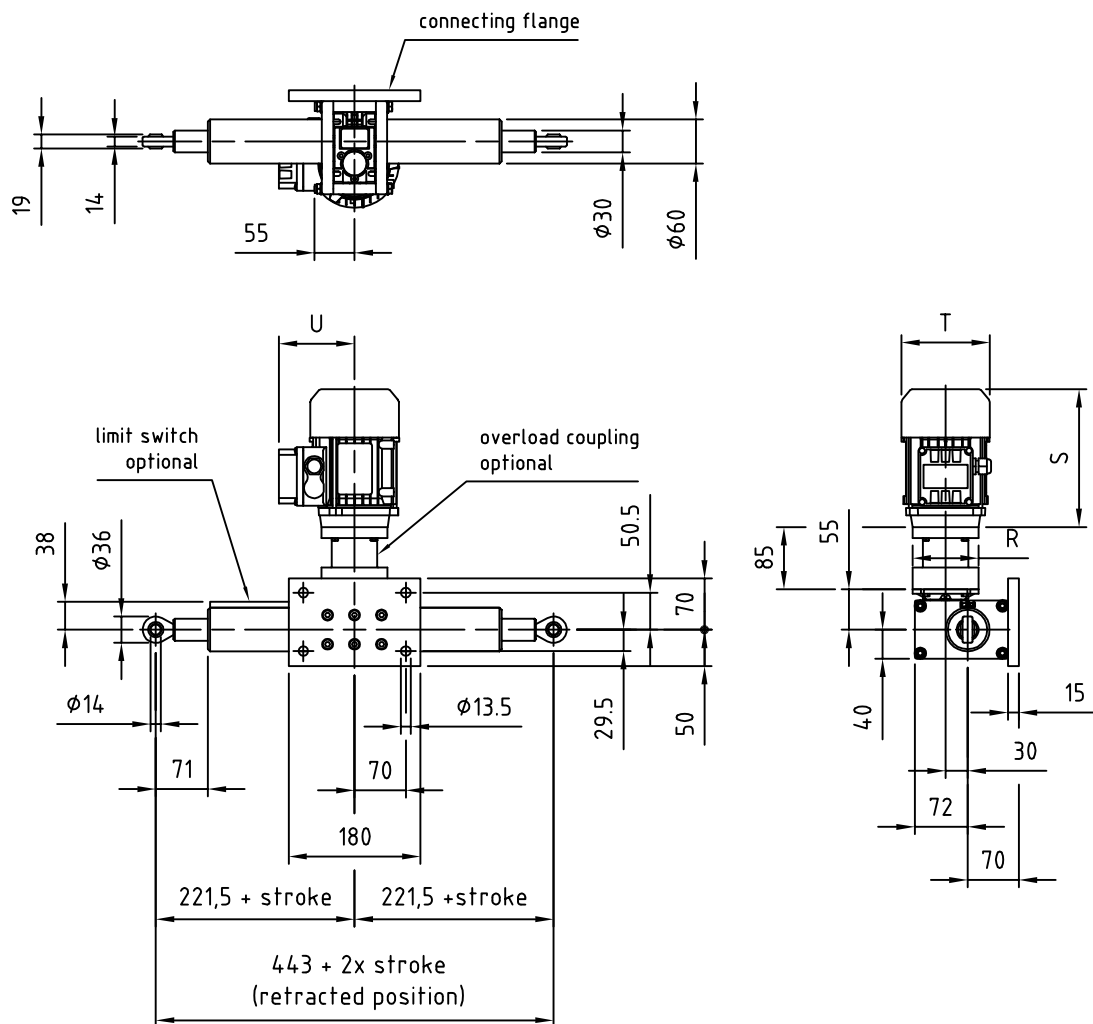
Technical specifications:

Type	Spindle	Adjustment force per side	Velocity	Motor Power	Speed / gear ratio
TV- 5SE-DO	Trapezium Ø 20 x 4	1,250 N	36 mm / s	IEC 63-2 0.37 kW	2,800 rpm i=5
		2,000 N	18 mm / s	IEC 63-4 0.25 kW	1,400 rpm i=5
		2,500 N	12 mm / s	IEC 63-4 0.22 kW	1,400 rpm i=7.5
		3,000 N	9 mm / s	IEC 63-4 0.22 kW	1,400 rpm i=10
		3,500 N	6 mm / s	IEC 63-4 0.18 kW	1,400 rpm i=15

Other forces and velocities are possible!
Stroke length up to 500 mm on each side



Electric Lifting Cylinder TV-5SE-DO one motor activates two screw drives



Motor	S	T	U	R
IEC 63	188	Ø121	104	Ø90
IEC 63 - brake	246			

Stroke length up to 500 mm on each side